



Siport21

**A DIFFERENT VIEW OF MARITIME AND PORT
ENGINEERING**



DNV·GL

Certificate No:
001/171027
DNV GL Id No:
10062583

PRODUCT CERTIFICATE

Particulars of Product

Function Area: **Bridge Operation Simulator**

Name and type designation: **Siport21 Manoeuvring Simulator**
In use for simulation at: **Siport21, Las Matas, Spain**

Particulars of Manufacturer

Manufacturer: **Marin**
Manufacturer address: **Wageningen, Netherland**

This is to certify:
That the above product is found to comply with Class S- Standard for Certification of Maritime Simulators No. DNVGL-ST-0033 March 2017.

Application
The above Standard is based on requirements in the STCW Convention, Regulation 1/12 and corresponding industry standard and guidelines.

This Certificate is valid until **2022-10-27**, provided that the requirements for the retention of the Certificate will be complied with.

Issued at **Sandefjord** on **2017-10-27**

for DNV GL

Capt. Aksel David Nordholm
Manager Simulator Certification

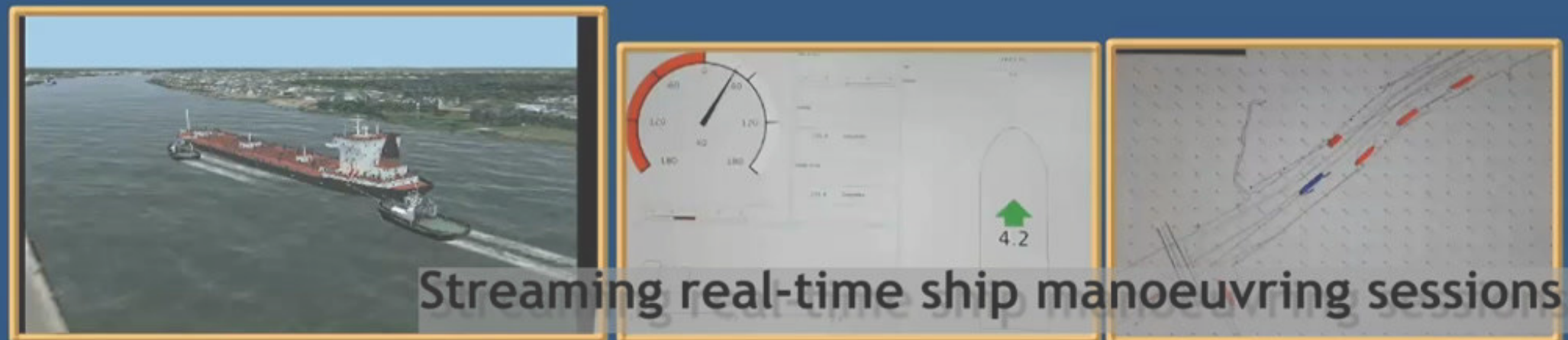
RENEWED UNTIL 2022

This Certificate is subject to terms and conditions everleaf. Any significant change in simulation performance may render this Certificate invalid.
Form code: MSS 311 Revision: 2018-03 www.dnvgl.com Page 1 of 3
© DNV GL 2014. DNV GL and the Horizez Graphic are trademarks of DNV GL AS.

Streaming manoeuvring simulations Anti-Covid Protocol



MANOEUVRABILITY
STUDIES



Remote training programmes Familiarization Modules in LNG Terminals

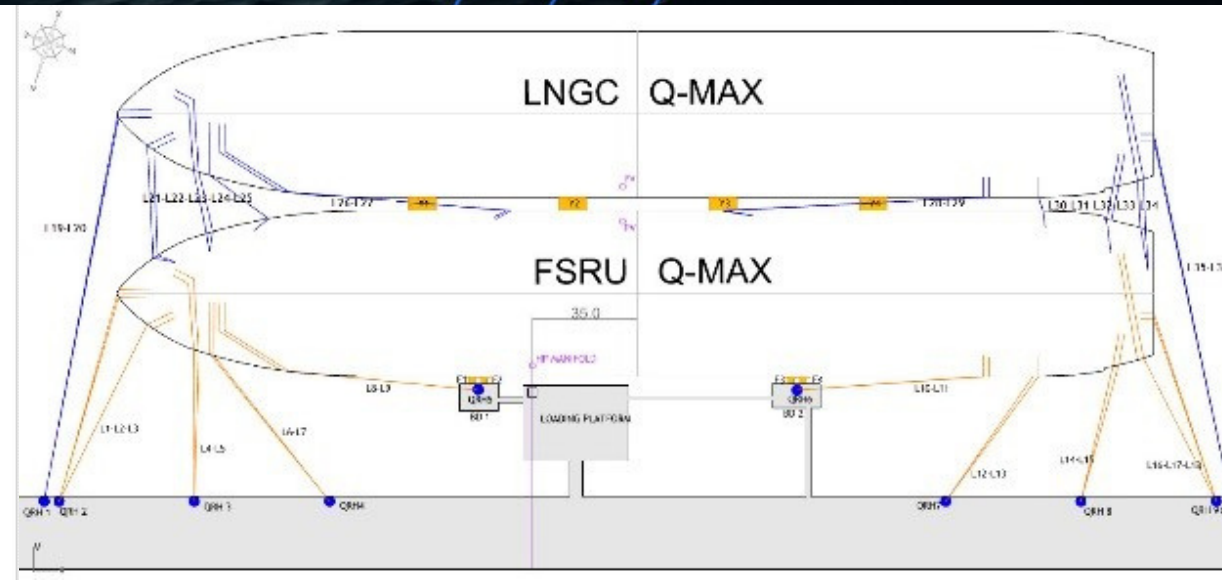
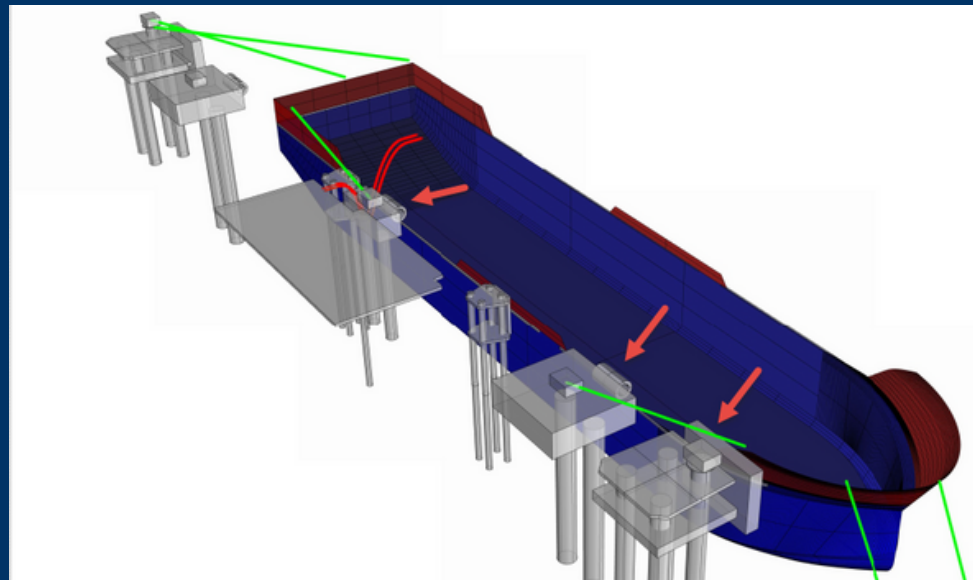


SIMULATION
CENTER

OPTIMOOR compatibility studies

Advanced DMA with **SHIP-MOORINGS**

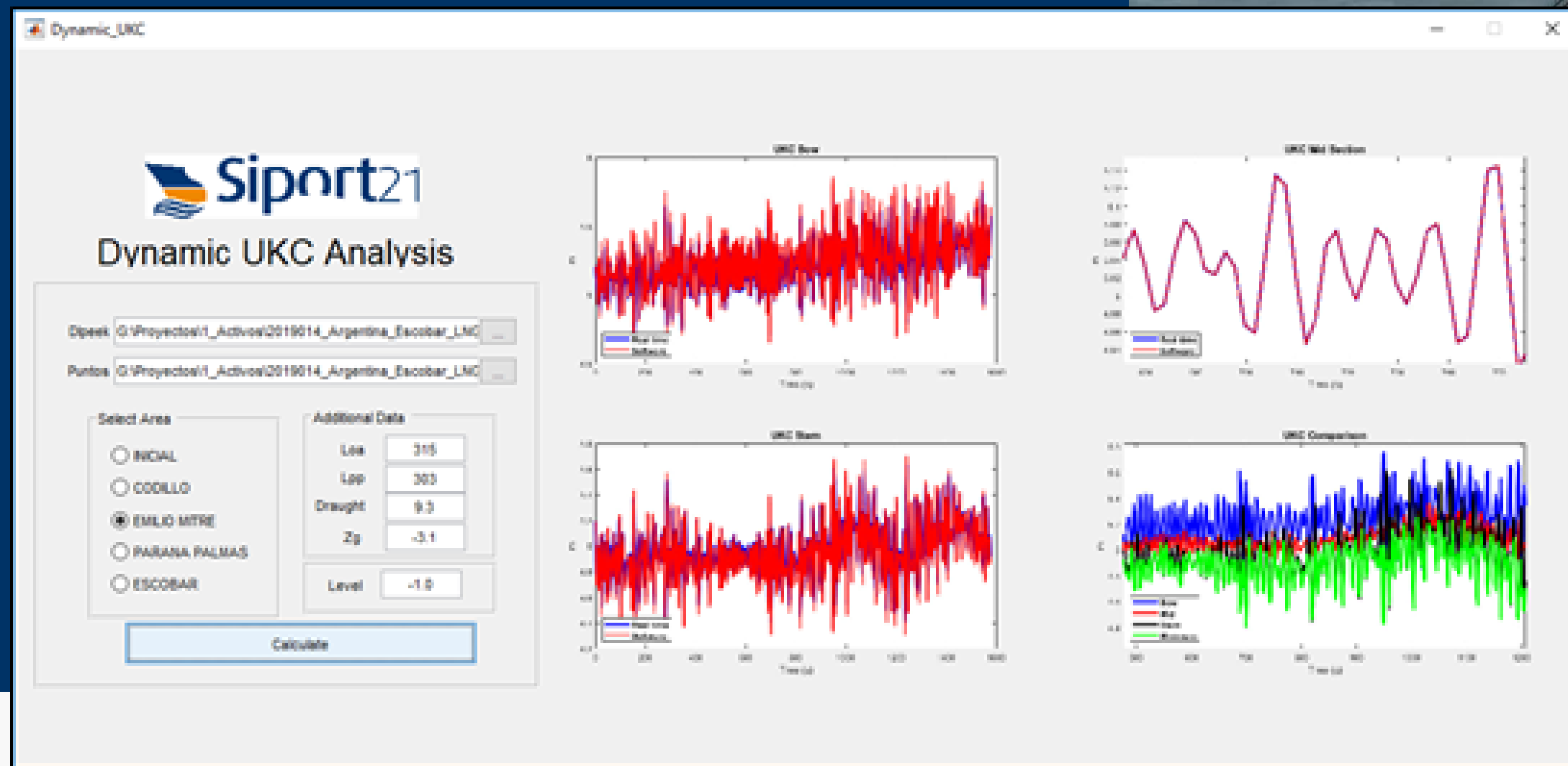
Complex configurations with **AQWA**



DYNAMIC
MOORING
ANALYSIS



Numerical Model for UKC determination



UKC



Maritime Traffic Analysis

Maritime Traffic Simulation

SIFLOW21

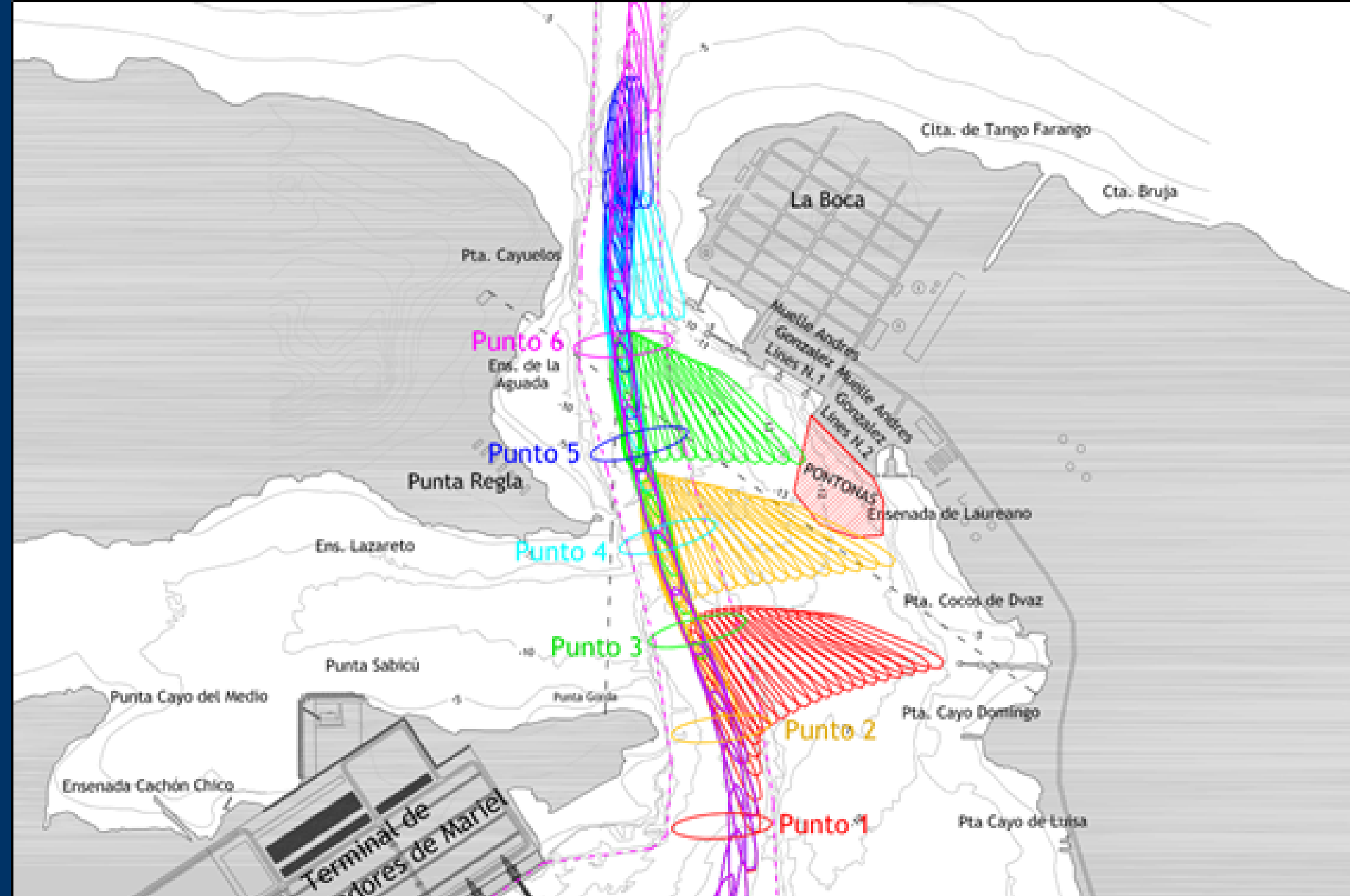
Smart System for the Evaluation and Control of Maritime Safety in Port Access and Operation



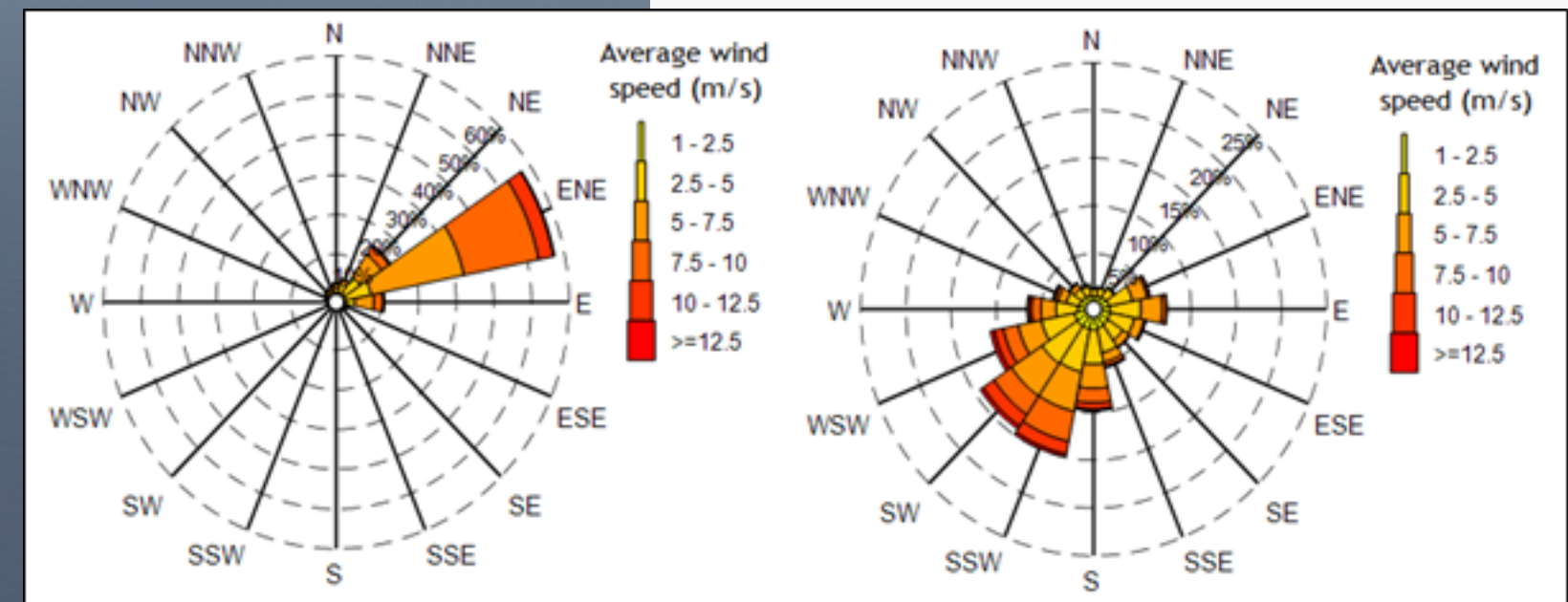
KWAPORT



A large number of **simulations** (hundreds/thousands of runs) processed in an optimum way



SHIPMA BATCH



Preliminary **Met-ocean and Operational Assessment** for Evaluation of Project Feasibility

MET-OCEAN
AND
OPERATIONAL
ASSESSMENT



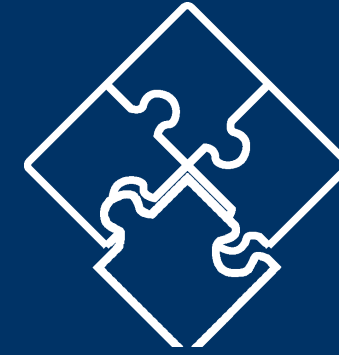
1.200
PROJECTS



22
YEARS



1.700
SEAFARERS

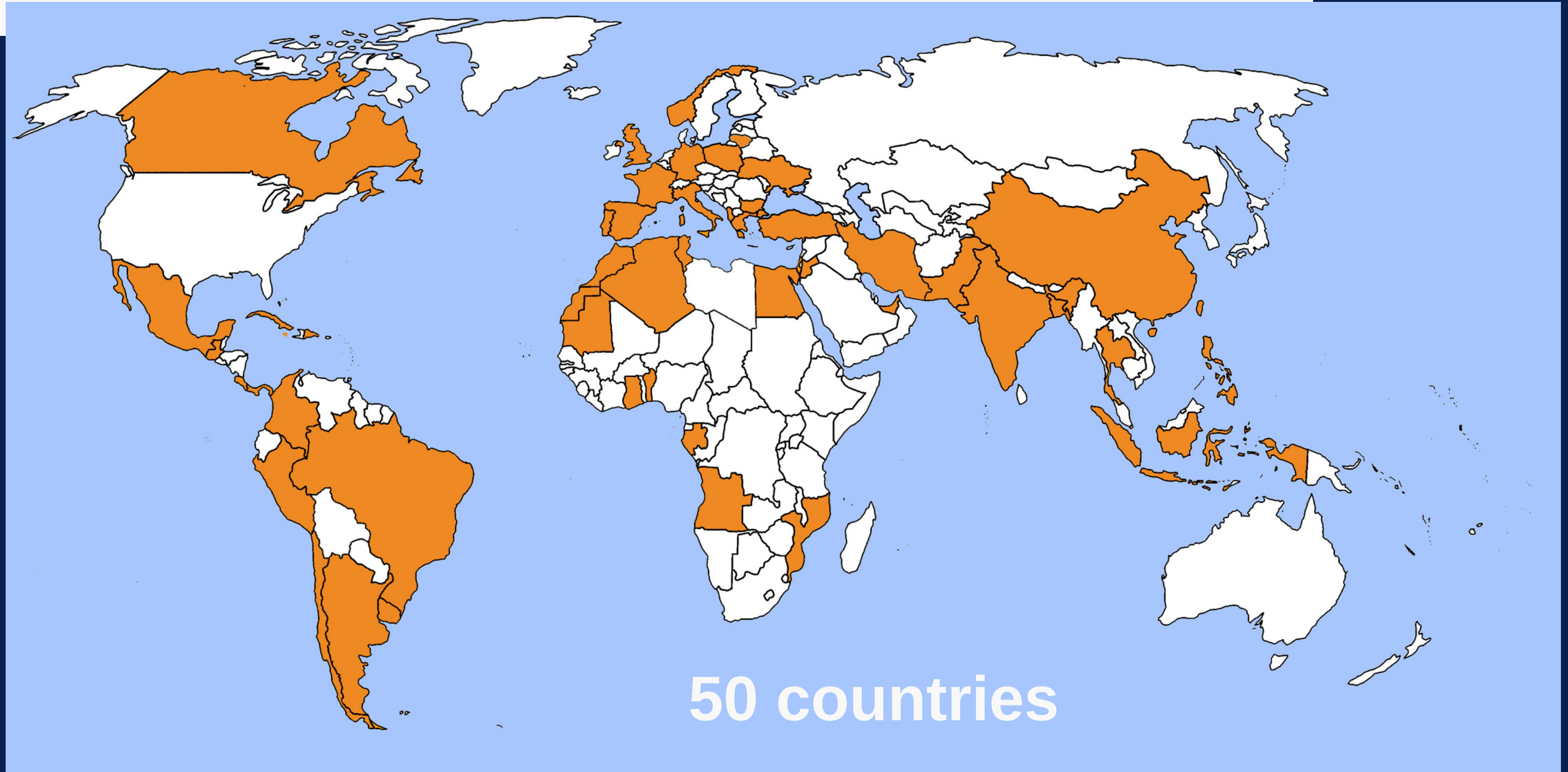


600 TRAINING
PROGRAMMES

Milestones



International Experience





Work with Us

8,Chile Street. 28290 Madrid (Spain)

siport21@siport21.com

www.siport21.com

34 91 630 70 73

